

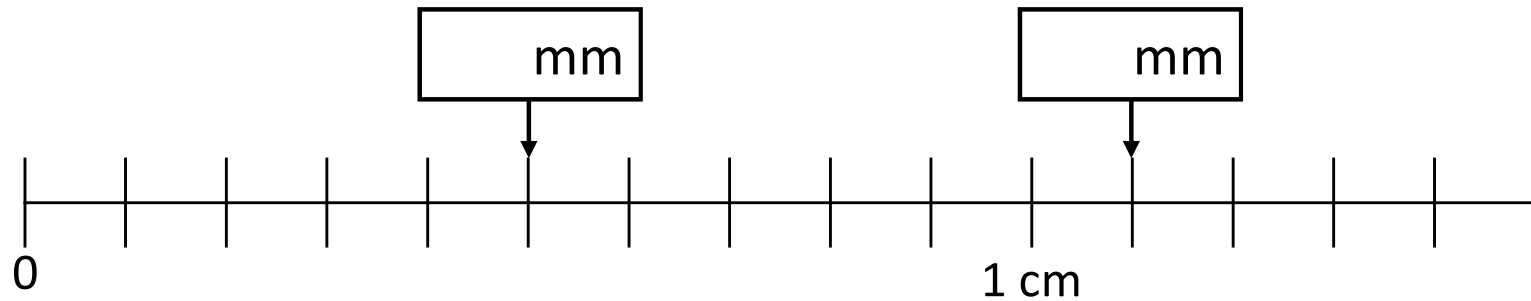
1) Which unit would you use to measure the length of a field?

millimetres

centimetres

metres

2)

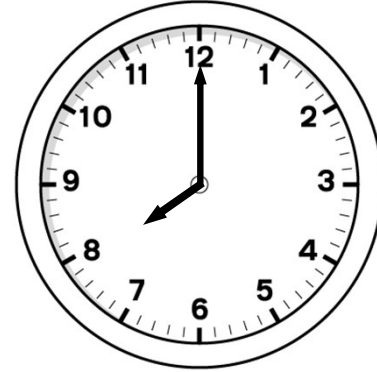


3)

$$14 \times 4 = \square$$

4)

$$600 \bigcirc 60$$



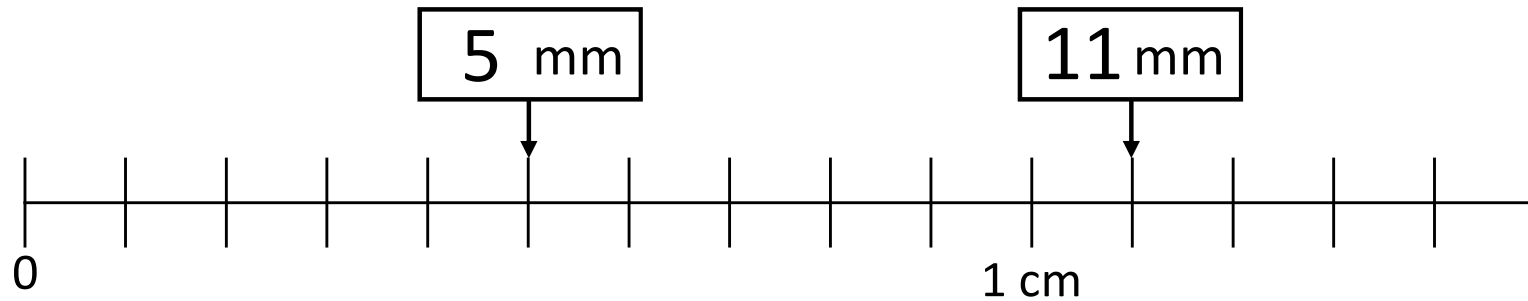
1) Which unit would you use to measure the length of a field?

millimetres

centimetres

metres

2)



3)  $14 \times 4 = 56$

4)  $600 > 60$