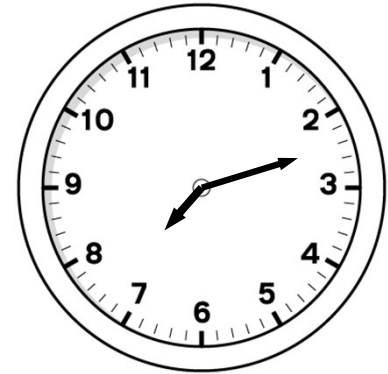
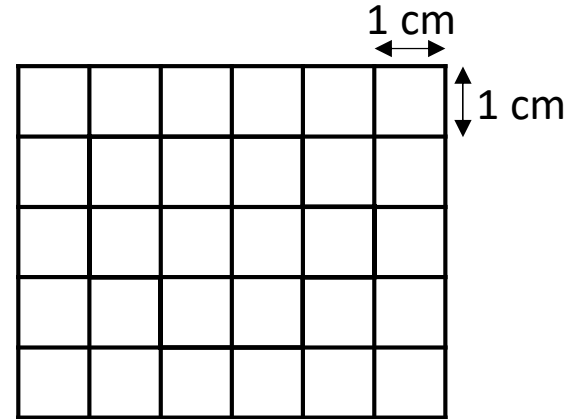


1) Work out the perimeter.



2) Write $<$, $>$ or $=$ to complete.

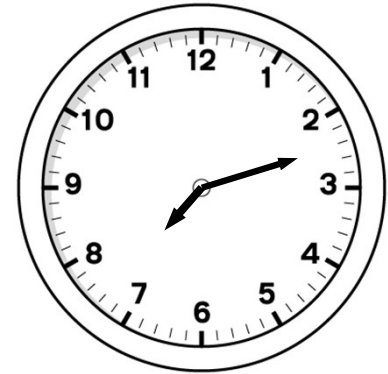
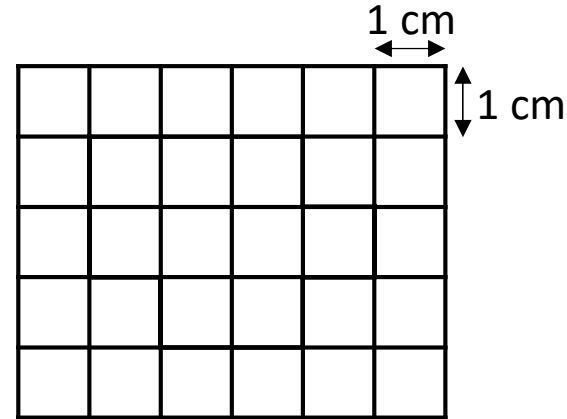
12 km and 90 m \bigcirc 9 km + 90 m + 3 km

3) $26 \times 3 = \square$

4) $6,405 + 778 = \square$

1) Work out the perimeter.

14 cm



2) Write $<$, $>$ or $=$ to complete.

12 km and 90 m $(=)$ 9 km + 90 m + 3 km

3) $26 \times 3 = \boxed{78}$

4) $6,405 + 778 = \boxed{7,183}$