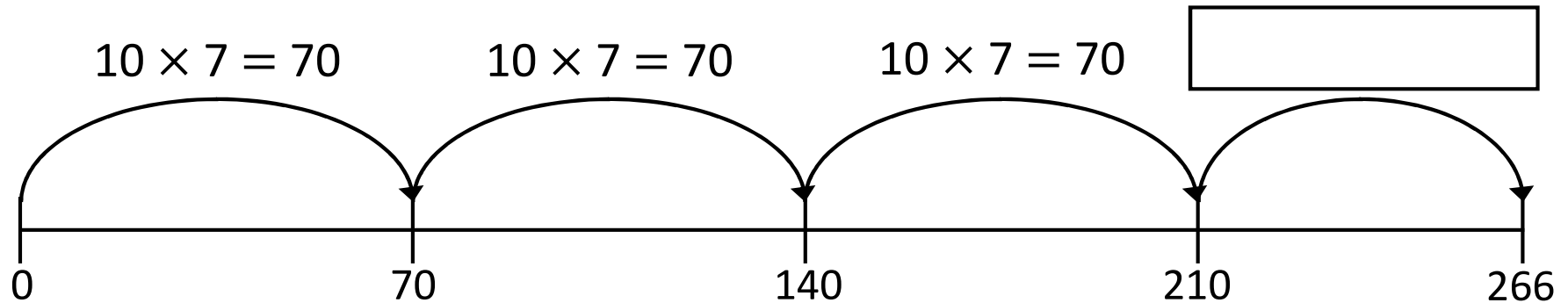


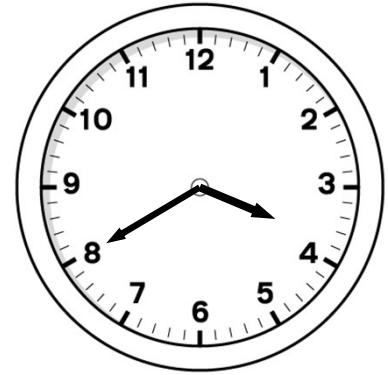
1)  $6 \text{ km } 300 \text{ m} = \square \text{ m}$

2)  $8 \times 14 = 8 \times 7 \times \square$

3) The number line shows  $7 \times 38$

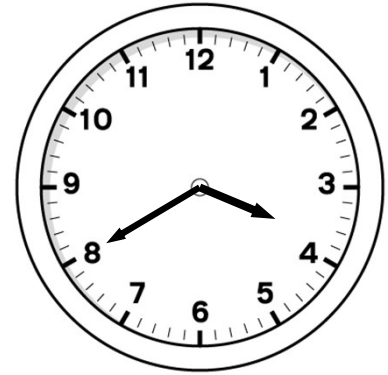


4)  $5,096 - 1,000 = \square$

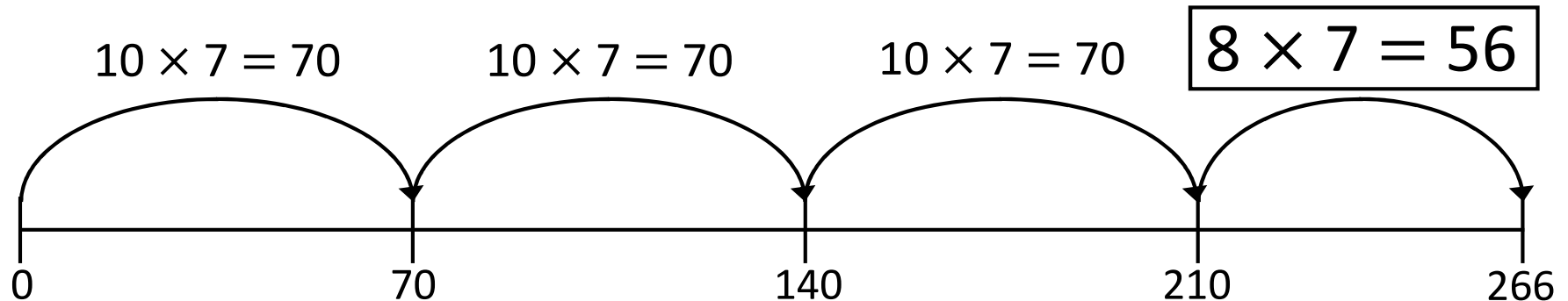


1)  $6 \text{ km } 300 \text{ m} = \boxed{6,300} \text{ m}$

2)  $8 \times 14 = 8 \times 7 \times \boxed{2}$



3) The number line shows  $7 \times 38$



4)  $5,096 - 1,000 = \boxed{4,096}$